

POWERCOMMANDER RGI-SDPPS3PWM



RGI-SDPPS3PWM

The RGI-SDPPS-3PB Power Commander is a state-of-the-art DC to DC step-down power supply.

The device provides three different software programmable power supplies, each capable of delivering up to 3.0A of continuous power and a high power 15A programmable PWM output, for driving high power lights.

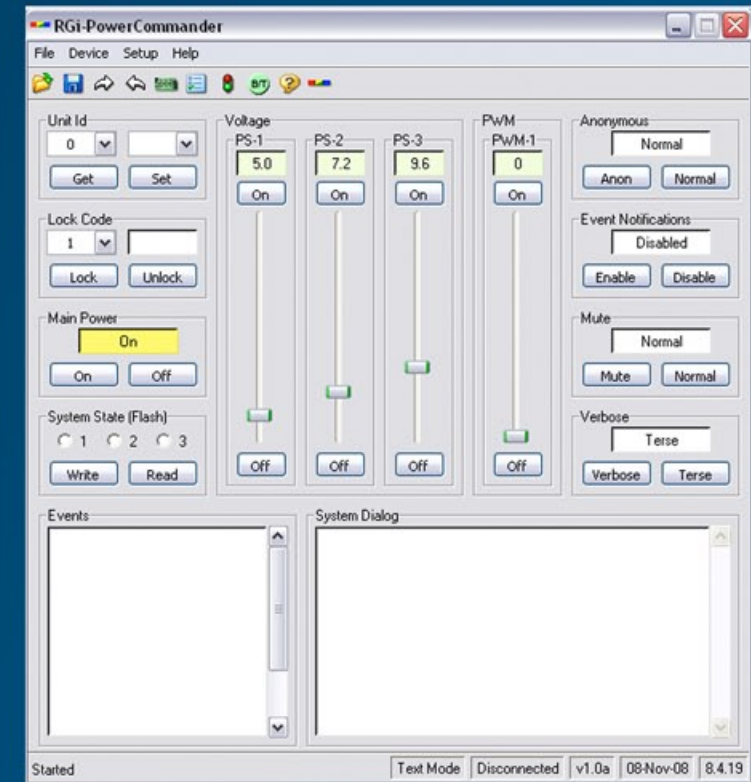
Just plug in your power source (up to 28V) and connect to your computer, and you are ready to control the voltages of the three independent power supplies with the included software control panel.

Attach the RJ-45 to our 802.11 Advanced Wireless Controller and you are able to control the PowerCommander from anywhere in the world.

Use this feature to power your Wireless Sensor Network or perform remote power management on your prototypes.

FEATURES:

- Easy-to-use high-current detachable screw-in terminal.
- DC input voltage up to 28V for power flexibility.
- Three independent supplies, programmable from 3.0V up to 24.0V, 3.0A continuous rating.
- PWM output, 0-100% duty cycle of DC input power or from any grounded DC source.
- Four LED lights show communications activity & on/off power supply state.
- DC input plug for easy connect/disconnect.
- Standard connector DB-9 RS-232 com port.
- RJ-45 provides programmable power and RS-232 communications in a single standard cable.
- Small compact size only 77x132x23mm.
- Easy-to-use socket-based control software.
-



RGI-PSCP Power Supply Control Panel